

Background

When taking a digital image of for example a tongue many things can happen in the transfer from the real world to the digital world.

The most common image format used (JPEG) and the compression applied changes the colours and the original colours can never fully be restored. In addition, different programs are likely to show the same image in slightly different shades.

The software of the camera used differs widely and the various colour balances are quite differently implemented, and whether to use flash or not is also of great importance on short distance.

The monitor where the image is shown can differ widely and the setting varies from user to user. Should someone get the bright idea to print out the image on paper, it just adds another variable to the list of possible defective factors.

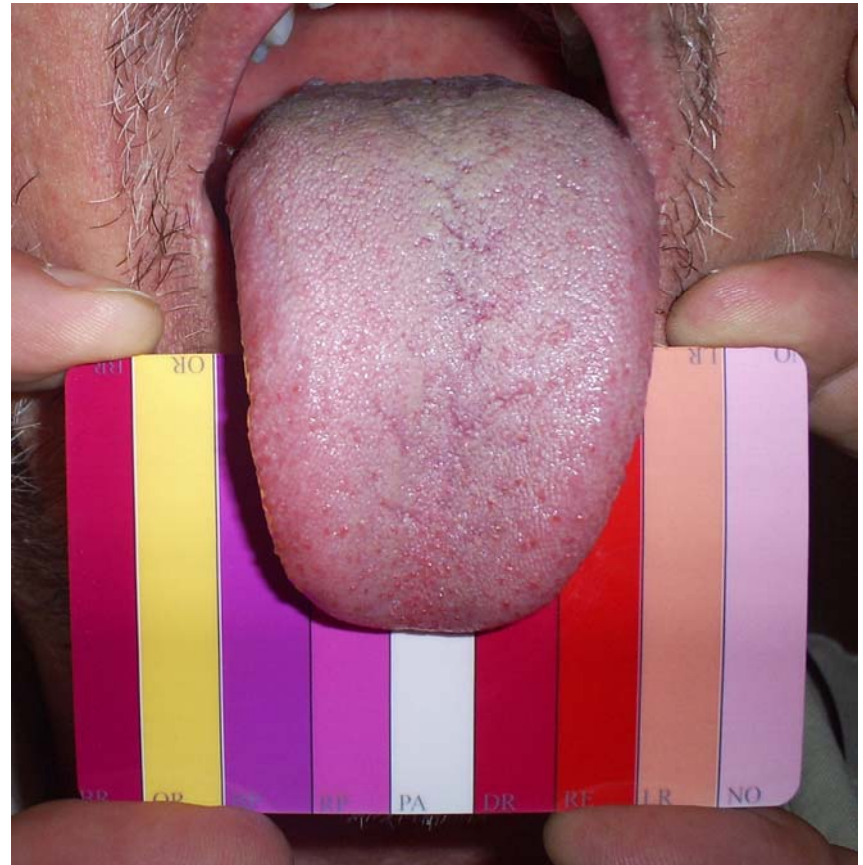
There is a need for a method which despite technology makes it possible to go back to the reality where the image was taken.

The solution is obvious: an unchangeable standard which relates to the object imaged is photographed with the object. It will then almost despite the “attack” of technology be possible to find back to how the object looked when the image was taken by seeing the unchangeable standard with the object.

The DorisPlate is this unchangeable standard and the answer to the problem. With its nine basic colours from tongue diagnostics it is possible to maintain a standard in the tongue image, and it will always be possible to rediscover the original colours of the tongue.

The DorisPlate

Find a way back to the original colours of the tongue



Description and Use 2011-01-12 

www.DorisPlate.com

The DorisPlate has printed a standardized colour palette adjusted tongue diagnostics.

The colours on the front have an abbreviation of the English names and on the back the English names of the colours are written in full.

Forkortelse	Farve navn
NO	Normal
LR	Light Red
RE	Red
DR	Deep Red
PA	Pale
RP	Redish Purple
BP	Bluish Purple
OR	Orange
BR	Black Red

How to take an image of the tongue:

When taking an image it is important to position the DorisPlate so that a part of the all the “stripes” are visible in the image.

It goes for the top side as well as the underside of the tongue that the tongue must be put out in a natural and relaxed way.

The surface of the tongue must be visible from the tip to the root of the tongue. If is not possible in one image the tongue must be read several times.

It shouldn't take longer tan 10-15 seconds each time. If the tongue is put out too much or for too long there is a risk of straining the lingual muscle and the tongue becomes more red or dark.

The plate is wiped with an alcohol wipe after use.

